


## Smart Deadbolt & Interconnected Deadbolt


Offered in both Smart Deadbolt & Interconnected Deadbolt models with one-motion egress, these brand new locks team Marks well-known reliability and quality, along with the flexibility of using them with top-level Napco smart platforms. Providing high-security smart device access, they eliminate key distribution hassles and associated costs, and are ideal for new construction or upgrading standard locks in today's growing multifamily housing residential market.



### Deadbolt Features

- No cylinder- For Pick-proof security
- Clutching outside turnpiece design - Provides extended battery life for less maintenance
- ADA compliant - UL Listed 
- Field reversible
- Weather resistant

### Interconnected Deadbolt Features

- Interconnect Inside Trim for One Motion Egress
- No cylinder- For Pick-proof security
- Clutching outside turnpiece design - Provides extended battery life for less maintenance
- ADA compliant - UL Listed 
- Field reversible
- 2¾" Backset standard; 2⅝" backset available

### Get More from Marks

Convenient, Easily Administered Smart Credentials  
Today's Consumers Want

Wireless & Key-free Operation

Low-Maintenance, Durable Locking

Choice of Interconnected Platforms  
for safe, secure management of the system,  
Traditional Enterprise, Cloud- &/or App-Based



# Interconnected Deadbolt

## Smart Electronics: Enterprise CA4K, MVP Access Cloud or MVP EZ App Management

Marks USA's Interconnected Deadbolt Lock Series blend architecturally-pleasing aesthetics with Napco's own advanced, scalable, proven, access-control locking platforms including new MVP Enterprise and MVP-EZ App Cloud-Based solutions.

Secure Network / IT-Friendly using three software management platforms: MVP Access Cloud with Mobile Link App, MVP EZ Cloud App and CA4K Enterprise Platform with wireless encrypted Gen 3 bi-directional gateways, in which many locks communicate to a single one. It can also be used in the same system, or entry areas, with electric strikes or mags, using Access Panels.

Wirelessly and labor-free, updates, credential changes, scheduled routines, and time-/date-stamped audit trail queries don't require going door to door. All can be securely made over the wireless network, on-demand, or set schedule. Lock programming can also be done via smartphone or tablet via Bluetooth connection.

Proven, low maintenance with durable all ANSI/BHMA hardware & unsurpassed battery-life, with up to 3 years of use, using AA batteries and advanced Power-Saver circuit. Approx. 2 years in real-time enterprise environments. (Actual battery life dependent upon setting, traffic and transactions.)



### Platform-Networked Specifications:

- Supports up to 5000 Key-free users
- Multiple Access Technologies supported (platform-dependent), i.e., prox, fob, smart cards (MiFare /EV1/EV2/EV3, see ordering\*\*), or iLock® for MVP App for Mobile Access credential via Smartphone
- Manual credential enrollment capability for Construction Mode
- Supports 254 time schedules and 30 holidays held in the lock.
- Provides 7,000 Event Audit Trail, with time- and date-stamp of access by user (stored in the lock)
- Uses 4 standard AA Batteries - Up to 3 years of battery life, credential dependent. Advanced Power-Saver circuit, with scheduled radio-dormant mode.
- 300+ Architectural lever designs
- Built-in wireless capability supports programming via Gen 3 Networx Gateways (in Ethernet/802.11 or POE models) (Platform Dependent)
- Long-range wireless programming
- MobileLink™ Phone Sync - Available on select models, MobileLink™ in the MVP Access or EZ App enables users to unlock doors and transfer data via Bluetooth, even without an internet connection. It securely syncs lock updates, including firmware, in Offline Mode, eliminating the need for a Gateway or RF communication for simplified, efficient lock management.



## Deadbolt & Interconnected Deadbolt Mechanical Specifications

### MECHANICAL SPECIFICATIONS:

#### Stand Alone Deadbolt

**Bolt:** 1" throw steel bolt

**Backset:** 2 $\frac{3}{4}$ " standard. 2 $\frac{3}{8}$ " available.

**Battery:** 4 AA (Note: 9V battery can supply power, if battery dies)

**Bore:** 2 $\frac{1}{8}$ "

#### Interconnected Deadbolt

**Backset:** 2 $\frac{3}{4}$ " standard. 2 $\frac{3}{8}$ " available.

**Battery:** 4 AA (Note: 9V battery can supply power, if battery dies)

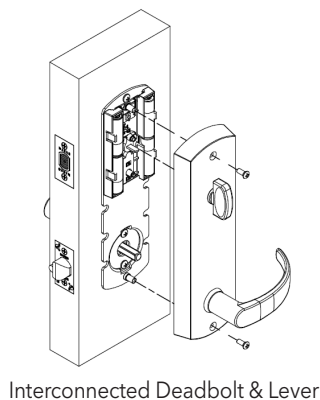
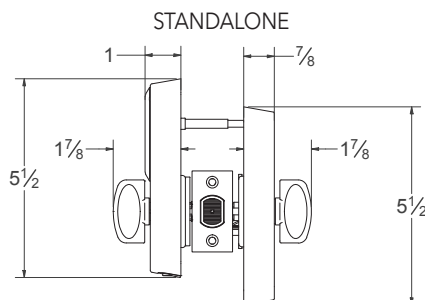
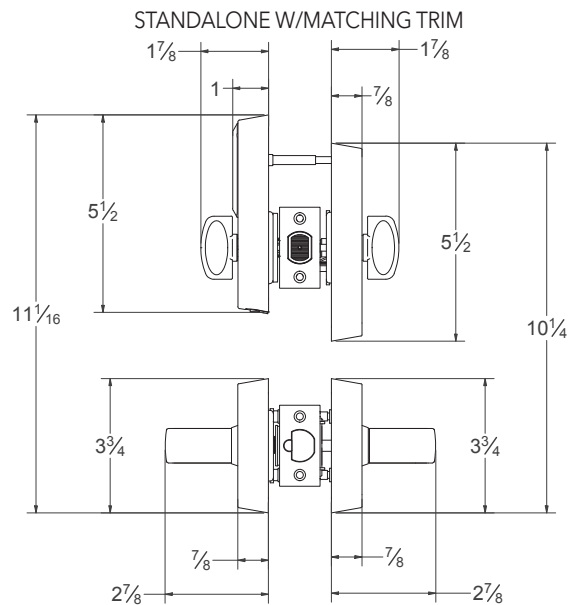
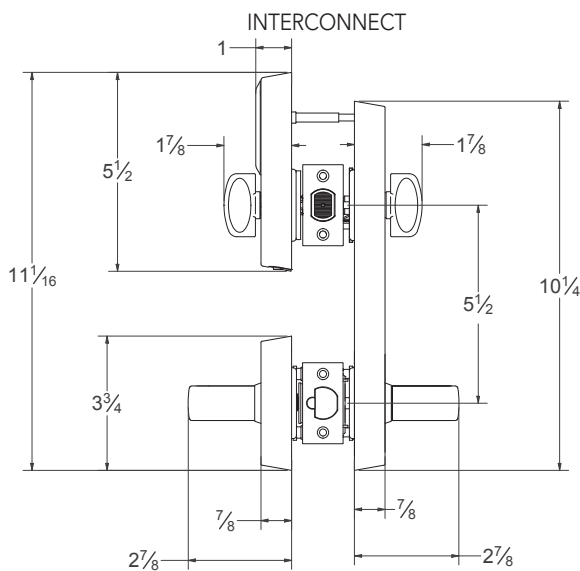
**Bore:** 2 $\frac{1}{8}$  x 2 $\frac{1}{8}$  bore 5 $\frac{1}{2}$ " center to center

**DB Bolt:** 1" throw steel bolt

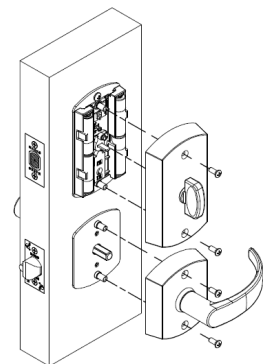
**Latch:** 9/16" stainless steel nose

**Lever:** American (92) and Crescent (86) design standard

**Finishes:** US 15 Finish standard. 19 Finish available. Consult factory on all other finishes.



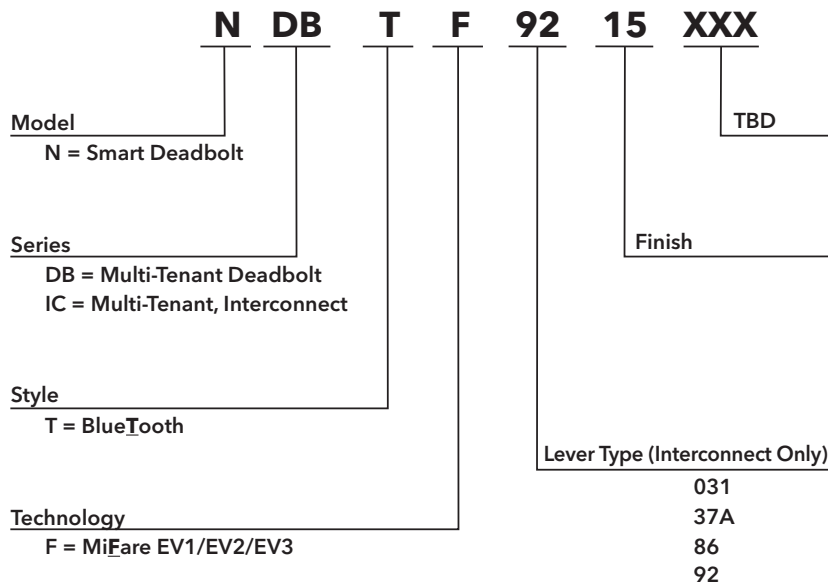
Interconnected Deadbolt & Lever



Stand-alone Deadbolt & matching Lever

## Deadbolt & Interconnected Deadbolt Ordering Information

### LOCK MODEL ORDERING CONFIGURATION:



#### Common Part Numbers:

Stand Alone Deadbolt NDBTF15

Stand Alone Deadbolt with matching independent cylindrical trim NDBTF92R/15

Interconnected Deadbolt NICTF92R15

#### ACCESSORY ORDERING INFORMATION:

**Mi422K-25** Mifare, 42 bit, 2K, EV2, 25 pack

**MiC2K-25** Mifare, Custom Card, 2K, EV2, 25 pack

**MVP-IM3-POE** Dedicated MVP POE Gateway, Gen. 3 Power of Ethernet, No AC power required.

**MVP-IM3-80211** Dedicated MVP Combo Gateway. Gen 3 Wired/Wireless, supports wireless or hardwire Ethernet connection

(Note Standard Network Gen. 3 Gateways are also supported, but will require MVP firmware download prior to use.).

**WI2835** Marks Deadbolt Lock Installation Guide

**WI2808** MobileLink Phone Sync Installation Guide (a feature of MVP Access/EZ App)

**KMi422K-10** Mifare, 42 bit keyfobs, 10 pack

**KMiC2K-10** Mifare, 42 bit Custom keyfobs, 10 pack

Preliminary Data Subject to change without prior notice. Many specifications relate to platform maximums and site application; see specifications on MVP Access, MVP EZ or CA4K Enterprise Software for more. A881, 4/25

Scan for  
More Info

